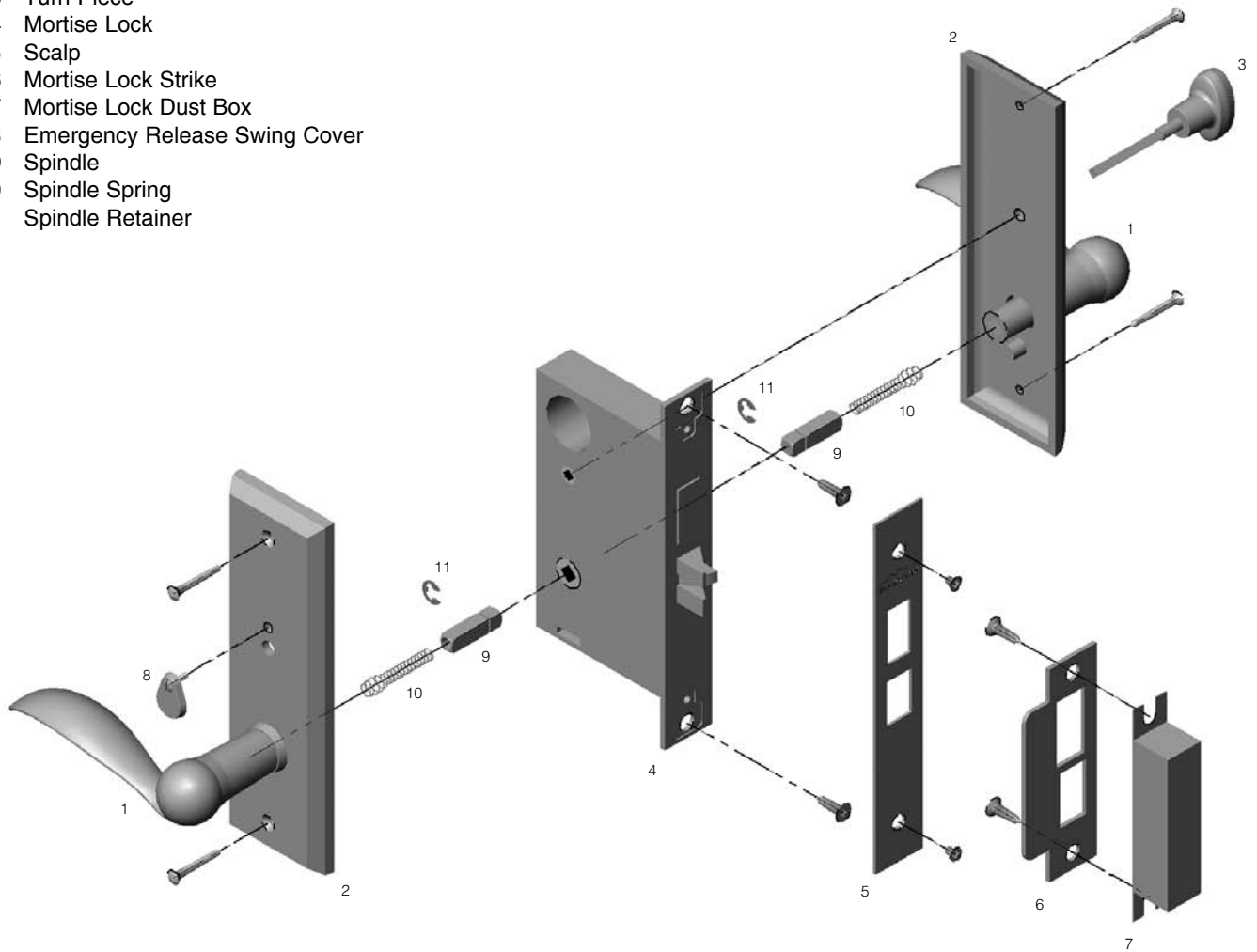


Privacy Mortise Lock Set—Lever to Lever

- 1 Lever
- 2 Escutcheon
- 3 Turn Piece
- 4 Mortise Lock
- 5 Scalp
- 6 Mortise Lock Strike
- 7 Mortise Lock Dust Box
- 8 Emergency Release Swing Cover
- 9 Spindle
- 10 Spindle Spring
- 11 Spindle Retainer



Note: Cut Shank on Turn Piece so that it goes halfway through the Mortise Lock. This will allow a space for the emergency release key to operate the Mortise Lock.

ROCKY MOUNTAIN[®]

H A R D W A R E

1020 Airport Way Hailey, Idaho 83333 USA
 toll free 888.788.2013 • ph. 208.788.2013 • fax 208.788.2577
 info@rockymountainhardware.com
 www.rockymountainhardware.com

201701